

KINGGates



INTRO

**AUTOMATION FOR SWING GATES
WITH LEAVES UP TO 4m - 650 KG**



Intro

Automation for swing gates with leaves up to 4 m - 650 kg

DESIGN AND TECHNOLOGY

The underground installation makes the automation completely invisible

without altering the appearance of the gate. The solid die cast aluminium and IP67 watertight seal ensure reliable operation and low maintenance. In the event of power failure, manual opening of the gate is immediate thanks to the release lever accessory, or in the 24 V version, the battery buffer system.

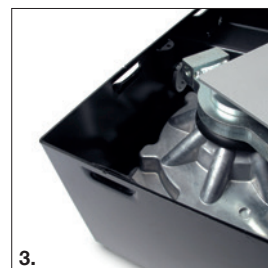
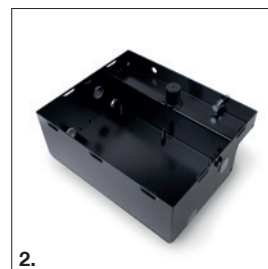
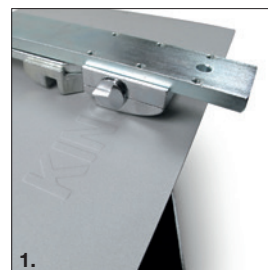
COMPLETE RANGE

The Intro automation is available in 230 V and 24 V versions, with electrophoretic painted and stainless steel boxes for a long working life and two types of release device, lever or key operated.

SMART TRADITIONAL ELECTRONICS

STARG8 control units radically simplify the installer's job, guaranteeing high levels of performance in terms of safety, time and speed of installation.

A single programming method speeds up the activation of the automatic devices and managing maintenance operations becomes simple and practical.



1. RELEASE

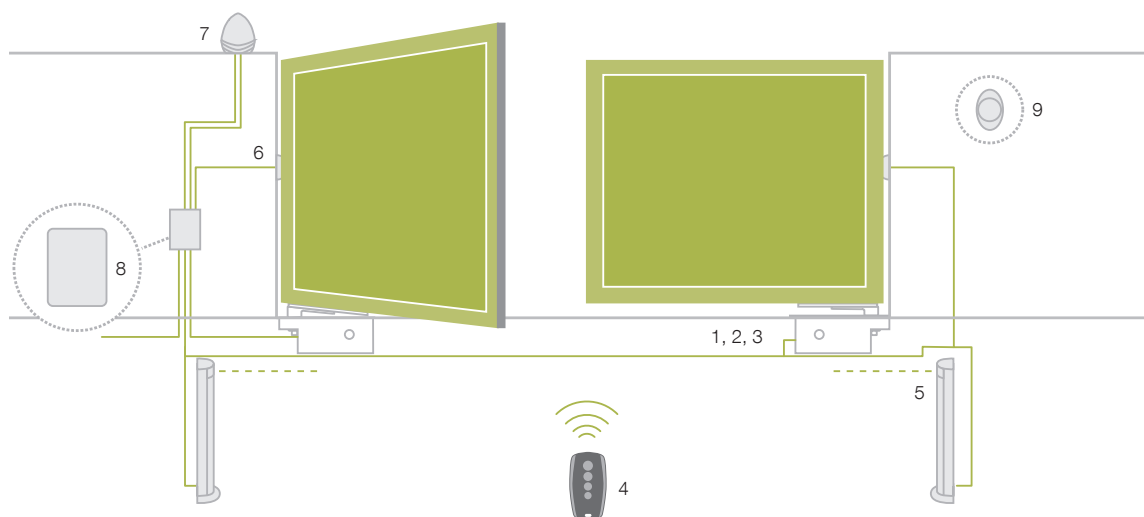
Available with key or lever

2. FOUNDATION BOX

Tough extra thick foundation box

3. MECHANICAL STOP

Opening and closing stop as standard

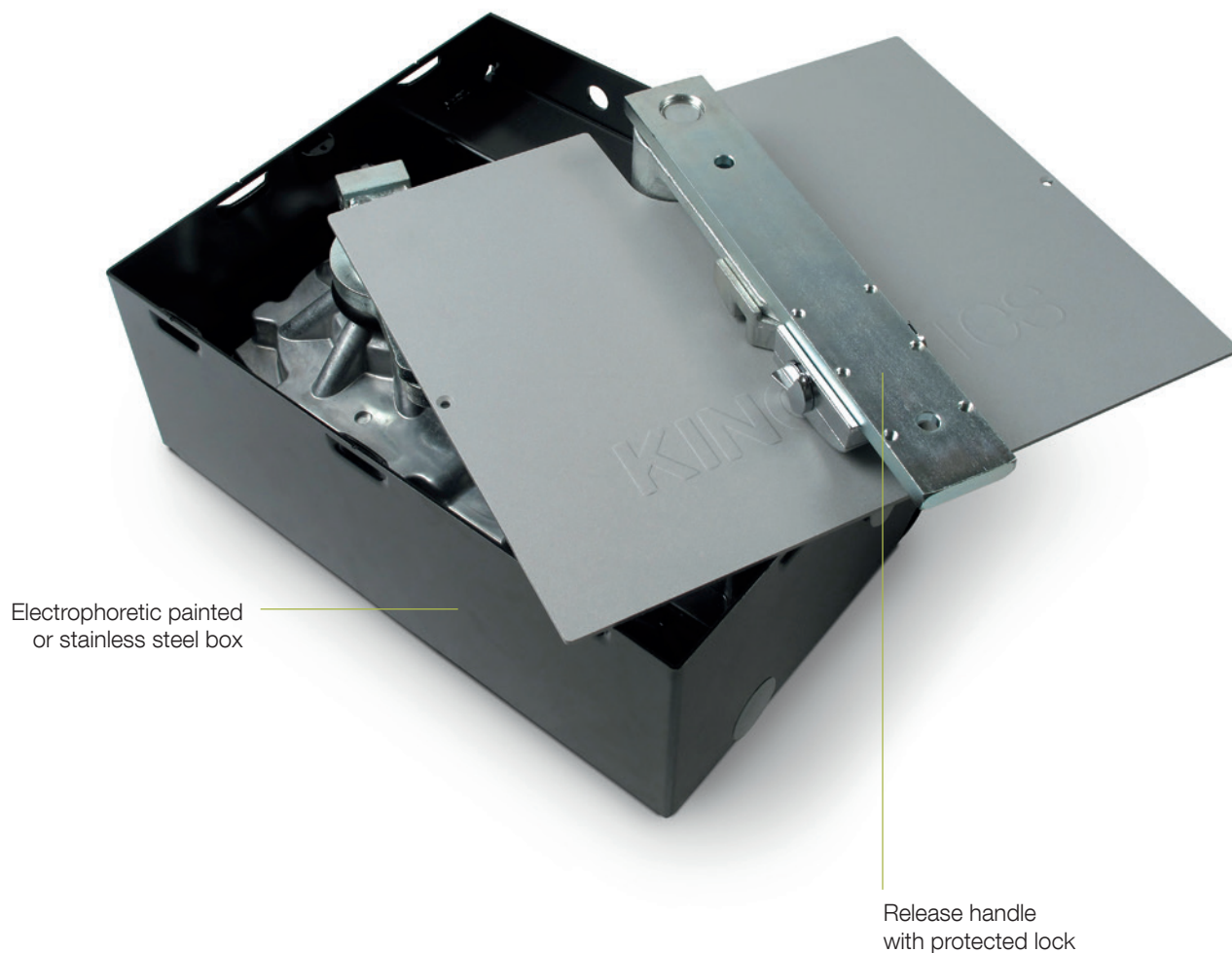


BASIC INSTALLATION

1. Operator Intro
2. Foundation box
3. Unlock system
4. Transmitter
5. Photocells mounted on posts
6. Photocells
7. Flashing light
8. Control unit
9. Key or digital switch

READY FOR





TECHNICAL DATA

Model		INTRO 24-400	INTRO 230-400
Code		22S001	22S057
Motor supply	(Vac 50 Hz / Vdc)	24 Vdc	230 Vac
Maximum power draw	(W)	120	340
Speed	(rpm)	1	0,85
Torque max	(Nm)	300	500
Working cycle	(%)	80	30
Protection level	(IP)	67	
Operating temperature	(°C)	-20 ÷ +55	
Leaf opening	(°)	Max 110 (360 con INT 360)	
Automation weight	(kg)	12,5	14,3
Foundation box dimensions	(mm)	400x325x152 h	

24 V version also available for markets with 110 V / 60 Hz mains power supply

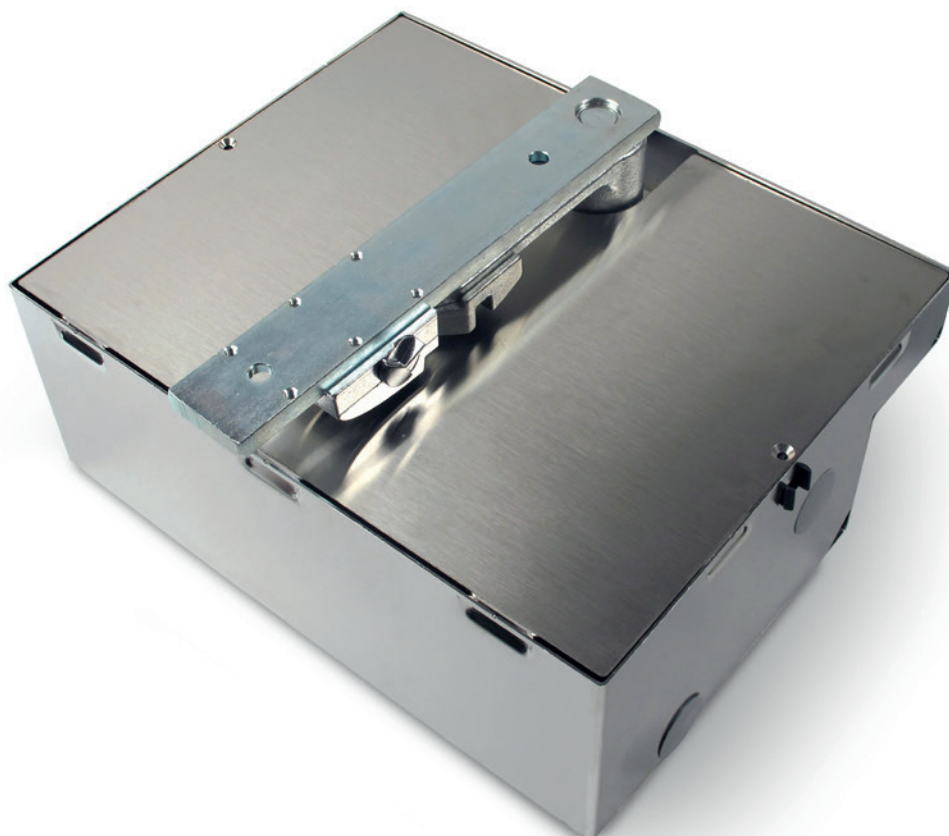
INTRO

Model	Motor	Mechanical stop in closing	Wing max dimensions
INTRO 230-400	230 Vac	•	4 m - 650 kg
INTRO 24-400	24 Vdc	•	4 m - 650 kg

CASSE DI FONDAZIONE

Model	Code	Zinc coated steel frame	Stainless steel frame	Lever unlock system	Mechanical stop in opening
INTROBOX 400	1622A6	•		-	•
INTROBOX 400 S	1622C7		•	-	•

Introbox boxes do not include the release lever. To complete the kit, add the "INTRO LOCK" or "INTRO KEY" code (see accessories)



ACCESSORIES



INTROLOCK - COD. 1622B1
Lever release unlock system



INTROKEY - COD. 1622A9
Key release unlock system



INTROFR - COD. 1622A8
Adapter for foundation boxes



INK - COD. 1722H7
Lever-type unlock for INTRO LOCK (4 pcs/pack)



INT 360 - COD. 162267
Kit for 360° leaf opening

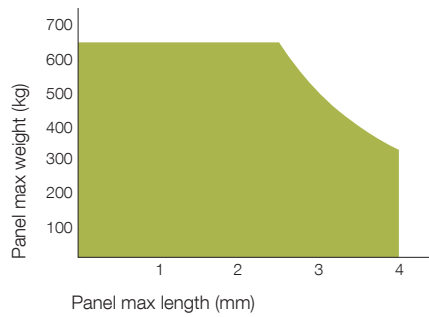


LOCK HO - COD. 162913
Horizontal
electro lock 12 V



LOCK VE - COD. 162912
Vertical
electro lock 12 V

LIMITS OF USE FOR THE PRODUCT





APP FOR THE INSTALLER

The Kingspecialist App allows you to complete all the programming phases of the installation, directly on the smartphone and tablet.



KINGSPECIALIST

BASIC PROGRAMMING

Automatic learning procedure, custom setting of the slowdown points, speed and direction of the motor. Realtime feedback of trimmers values (motor power, obstacle sensitivity, delay, pause), Dip-switches and connections instructions.

ADVANCED SETTINGS

Advanced programming. Setting of AUX, HAZ and GSI outputs. Management of inputs for photocells. Setting of wired inputs. Speed and slowdown points custom configuration. Power saving mode (Standby). Backjump adjustment. Factory settings reset.

MEMORIZING REMOTE RADIO CONTROLS

Quick and easy procedure for memorizing remote radio controls near control panel, without having to access it. Copy of transmitters functions. Management of MEMO 2000 module (remote controls backup and restore on replacement control board).



KINGgates

Brand of V2 S.p.A.

Corso Principi di Piemonte 65/67
12035 RACCONIGI CN (ITALY)